

0~+3 W

POSITIVE TOLERANCE

Positive tolerance of up to 3W delivers higher output reliability.

410W

POWER OUTPUT

Monocrystalline Module

4mm² cable 100cm

OUTPUT CABLES

Including MC4 connector

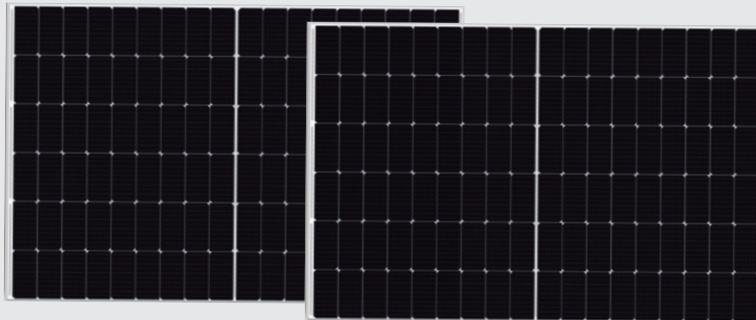
20.97%

MODULE EFFICIENCY

half-cell designs improves the module's performance and durability.

Mono Half Solar Panel

WHITE FRAME



10 YEAR

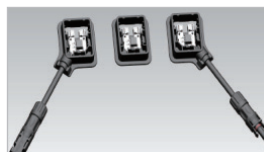
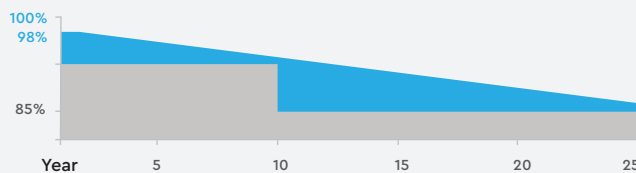
WARRANTY

PRODUCT MATERIAL AND WORKMANSHIP

25 YEAR

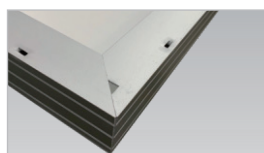
WARRANTY

LINEAR POWER OUTPUT



JUNCTION BOX

WATERPROOF PROTECTION GRADE: IP67/IP68
SAFETY LEVEL: CLASS II
MAXIMUM SYSTEM VOLTAGE: 1500V
OUTSTANDING WATERPROOF LEVEL.
EFFECTIVELY RESIST HARSH ENVIRONMENTS



FRAME

STRONG MACHINICAL LOAD
RESISTANCE UP TO 5400PA
ANODIC OXIDATION LAYER RESISTANT TO
CHEMICAL CORROSION AVAILABLE
IN SILVER AND BLACK



HALF-CUT TECHNOLOGY

New Circuit Design, Lower Internal Current And Lower Internal Resistance Loss



SIGNIFICANTLY AVOIDING HEAT SPOT

The unique circuit design to reduce the temperature Of heat spot significantly,so that to reduce the power loss And then increase the output of modules.



LOWER COST

Increasing power generation can reduce the cost per kilowatt-hour

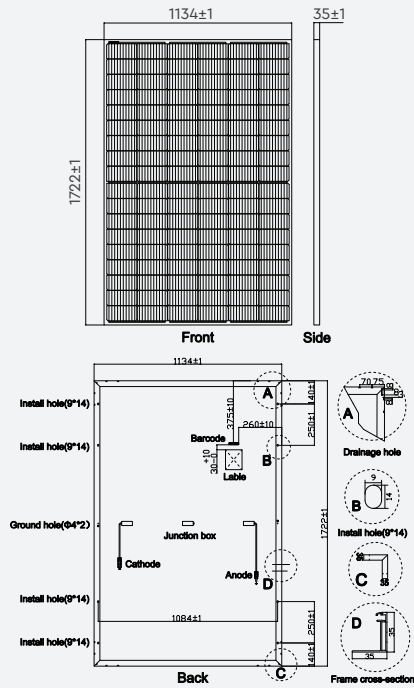


EXCELLENT PERFORMANCE OF PID RESISTANCE

The performance of PID resistance(Potential Induced Degradation) passed the standard of TUV Nord.



DRAWING AND DIMENSION CURVE



ELECTRICAL DATA (STC)

Peak Power(Pmax)	410.00
Maximum Power Voltage(Vmp)	31.46
Maximum Power Current(Imp)	13.04
Open Circuit Voltage(Voc)	37.45±3%
Short Circuit Current(Isc)	13.85±3%
Module Efficiency(%)	20.97

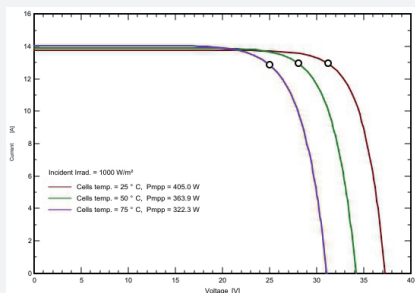
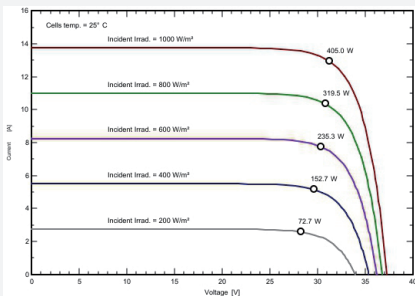
ELECTRICAL DATA (NOCT)

Peak Power(Pmax)	304.8
Maximum Power Voltage(Vmp)	29.20
Maximum Power Current(Imp)	10.44
Open Circuit Voltage(Voc)	35.05±3%
Short Circuit Current(Isc)	11.16±3%

TEMPERATURE & MAXIMUM RATING

Maximum System Voltage V)	1500 V
Maximum Series Fuse Rating A)	25A
Power Tolerance	0~+3 W
Pmax Temperature Coefficient (W/°C)	-0.350 %/°C
Voc Temperature Coefficient (V/°C)	-0.285 %/°C
Isc Temperature Coefficient (A/°C)	+0.045 %/°C
NOCT Nominal Operating Cell Temperature (°C)	45±2°C
Operating and Storage Temperature (°C)	-40~+85°C

IV CURVE



MECHANICAL CHARACTERISTICS

Cell Type	182*91 Mono
No. of Cells	108 (12*9)
Dimensions	1722*1134*35mm
Weight	21.50kg
Front Glass	3.2mm high transmission, low iron, tempered glass
Frame	Anodized Aluminium Alloy
Junction box	IP67/IP68 3diodes
Output cables	4mm² cable 100cm (Including MC4 connector)
MaxWind Load/Snow Load	2400Pa/5400Pa

LISTING DETAILS

Model No: VT-410
SKU Code: 11518
EAN Code: 3800157693509

MASTER BOX PACKAGING

20ft Container:
6 Packages/186pcs
40ft Container:
26 Packages/806pcs